

Professional Stainless Steel Supplier-GNEE

STAINLESS STEEL 316-316L

316/1.4401/UNS S31600

316L/1.4404/UNS S31603

Chemical Composition

| Element | 316 | 316L |
|------------|-----------|-----------|
| Carbon | 0.08 | 0.030 max |
| Chromium | 16.0-18.0 | 16.0-18.0 |
| Nickel | 10.0-14.0 | 10.0-14.0 |
| Molybdenum | 2.00-3.00 | 2.00-3.00 |
| Manganese | 2.00 | 2.00 |
| Silicon | 0.75 | 0.75 |
| Nitrogen | 0.10 | 0.10 |
| Phosphorus | 0.045 | 0.045 |
| Sulfur | 0.030 | 0.030 |

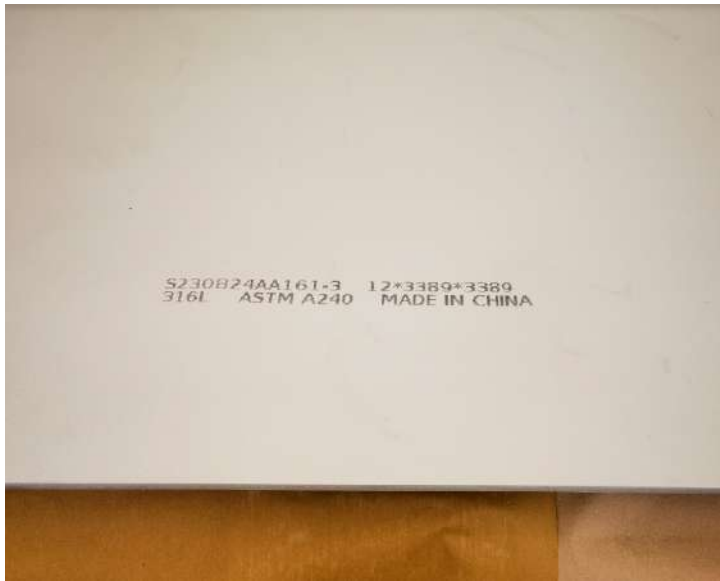
Mechanical properties

| Property | 316 | 316L |
|------------------------------|-----|------|
| Yield Strength, min. (ksi) | 30 | 25 |
| Tensile Strength, min. (ksi) | 75 | 70 |
| Elongation, min. (%) | 40 | 40 |
| Hardness, max. (Rb) | 95 | 95 |

Physical properties

| Property | 316/316L Data |
|---|----------------------|
| Density, lb/in ³ | 0.290 |
| Modulus of Elasticity, psi | 29.0×10^6 |
| Coefficient of Thermal Expansion, 68-212°F, /°F | 9.2×10^{-6} |
| Thermal Conductivity, Btu/ft hr °F | 9.4 |
| Specific Heat, Btu/lb °F | 0.12 |
| Electrical Resistivity, Microhm-in | 29.4 |

316 316L Stainless Steel Plate, Sheet & Coil



Product name: Stainless steel plate

Type: Plate

Thickness:0.3-200mm

Length:2000mm/2438mm/3000mm/5800mm/6000mm/12000mmWidth:40mm-600mm/1000mm/
1219mm/1500mm/1800mm/2000mm/2500mm/3000mm/3500mm

Standard:ASTM/AISI/JIS/GB/DIN/EN

Surface:BA/2B/NO.1/NO.4/4K/HL/8K

Certificate:ISo/SGS/BV

Production technology: Hot Rolled / Cold Rolled

Edge treatment: Edging /trimming



2B



8K



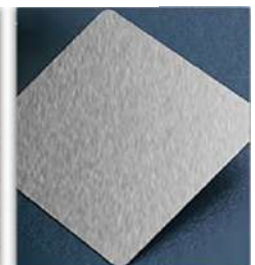
BA



HL



NO.1



NO.4

Stainless steel profiles



Round bar: 4mm-500mm

Hexagonal bar: 18mm-57mm (11/16" to 2-3/4")

Square bar: 18mm-47mm (11/16" to 1-3/4")

Flat bar: 1/2" to 10", Thickness: 2mm-150mm, customizable

Length: 1-6 meters, customizable

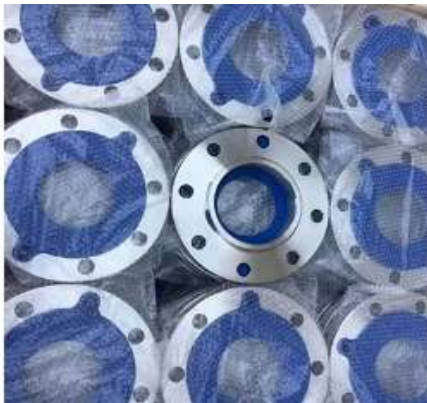
Standard: ASTM / AISI / JIS / GB / DIN / EN

Surface: black, bright polished, rough turned, matte surface treatment, NO.4, BA, etc.

Certificate: ISO / SGS / BV

Production technology: hot rolling / cold rolling

Product :Forgings/Flanges
Standard: ASTM A182



Product: (Elbow, Reducer, Cap, Tee, Stub Ends)
Standard: ASTM A403

